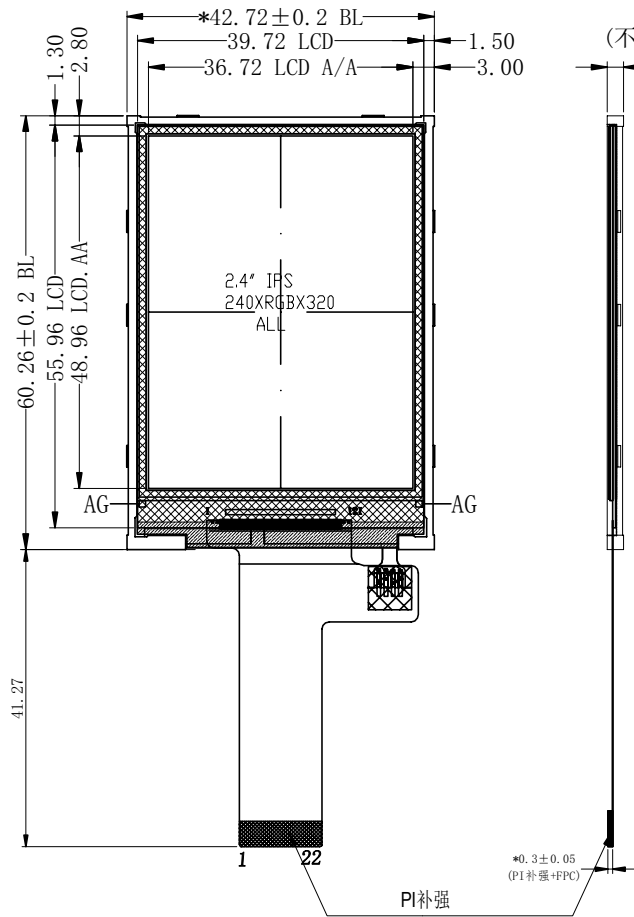
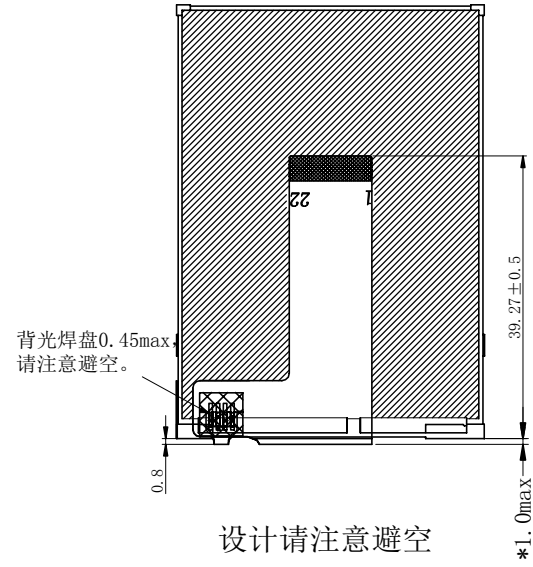
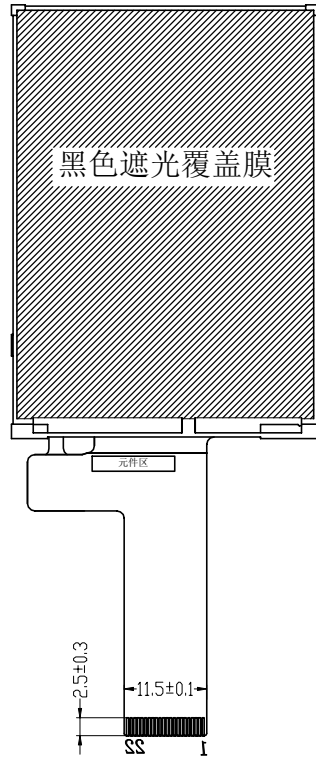


8 7  
**已确认此版本的所有图纸**  
 客户签名: 日期:

REV	DESCRIPTION	DATE
0.0	初次发行	2021-1-7



(不含FPC, 背胶厚度)

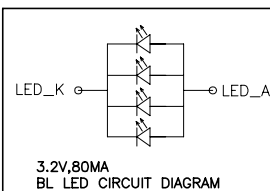


PIN	DESCRIPTION
1	LEDA
2	LEDK
3	NC
4	NC
5	NC
6	IDVCC
7	D7
8	D6
9	D5
10	D4
11	D3
12	D2
13	D1
14	DO
15	RD
16	WR
17	RS
18	CS
19	TE
20	RESET
21	GND
22	GND

FPC丝印: JM-PT030

Specification:

- 1). Display mode: 262K Color TFT/Transmissive
- 2). Viewing angle: ALL
- 3). Operating temp.: -20° C~+70° C  
Storage temp.: -30° C~+80° C
- 4). IC:ST7789V
- 5). Backlight: 4 chip White LED ,in parallel
- 6). Dimensions with mark "\*" are important, with mark "()" are referenced



Kingtech Group Co.,Ltd.	TITLE:	ASSEMBLY	DO NOT SCALE THIS DRAWING, GENERAL TOLERANCE:±0.2	
	PART NO.:	PV02413HZ22N		
	DRAWN BY:		DATE:	PROJECTION:
	CHECKED BY:		DATE:	SCALE:N.T.S UNIT: mm
	APPROVED BY:		DATE:	SHEET: 1 OF 1

D  
C  
B  
A

D  
C  
B  
A

8 7 5 4 3 2 1