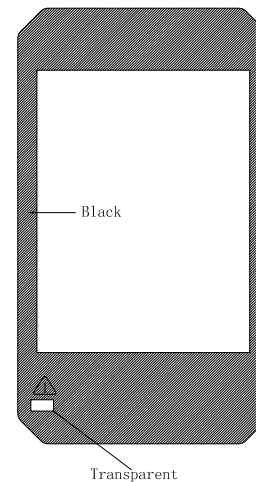
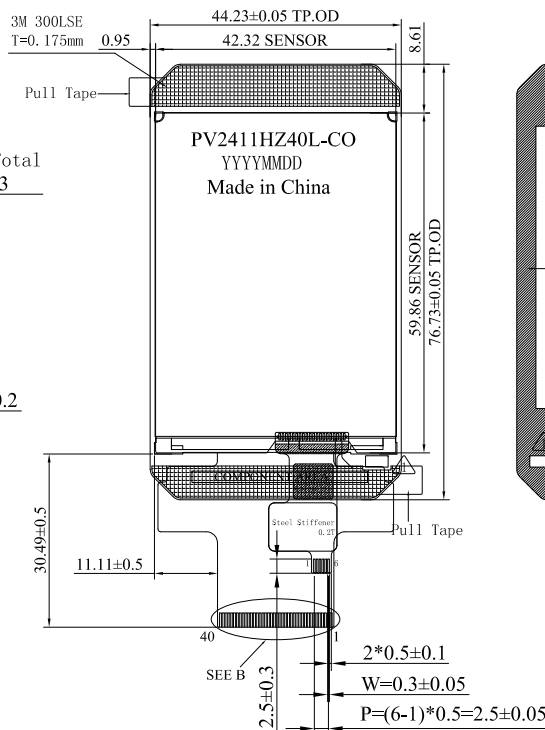
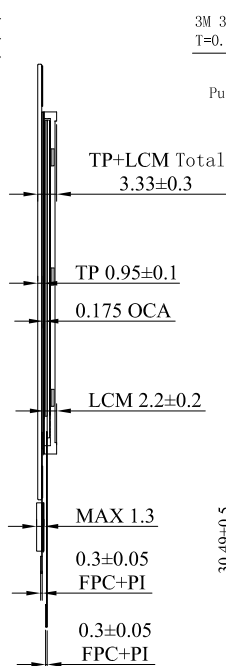
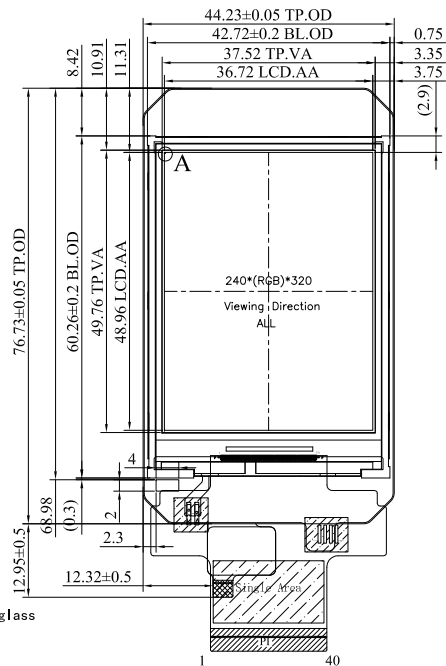


已确认此版本的所有图纸

客户签名: 日期:

REV	DESCRIPTION	DATE
1.0	首次设计	2021-11-05
1.1	增加透明孔, 修改双面胶形状	2021-11-15



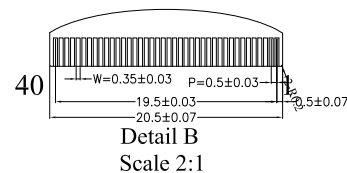
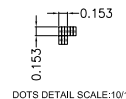
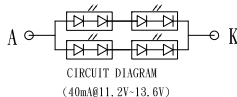
Pin Description

Pin	Name	Pin	Name
1	GND	21	DB7
2	NC	22	DB8
3	NC	23	DB9
4	NC	24	DB10
5	NC	25	DB11
6	LCD_ID	26	DB12
7	VCC	27	DB13
8	IOVCC	28	DB14
9	FMARK	29	DB15
10	CS	30	RESET
11	RS	31	IMO
12	WR	32	NC
13	RD	33	GND
14	DB0	34	LED-1
15	DB1	35	LED-2
16	DB2	36	LED-3
17	DB3	37	LED-4
18	DB4	38	LED-A
19	DB5	39	GND
20	DB6	40	NC

- Parameters:
- CTP structure:G+F Cover glass:0.7mm tempered glass
 - COF type:COF;Driver IC:FT6336G; Working voltage:2.8V
 - Transisive rate:≥80%
 - Surface hardness:≥6H
 - Working temperature:-20℃~70℃, ≤85%RH
 - Storage temperature:-30℃~80℃, ≤85%RH
 - Unmarked tolerance:±0.2mm
 - Material match RoHS standard.

Notes:

- Display Mode:262K TFT/Normally Black
- Viewing Angle: ALL
- LCD Driver IC: ILI9341V
- Operating Temp:-20℃ ~ +70℃
- Storage Temp:-30℃ ~ +80℃
- *:Critical Dimension,():Reference Dimension
- Undefinition Tolerance:±0.2
- Requirements on Environmental Protection:ROHS
- Surface Luminance:640 CD/M²



1	VDD
2	GND
3	RST
4	SCL (2.8V)
5	SDA (2.8V)
6	TP_INT

Kingtech Group Co.,Ltd	TITLE: ASSEMBLY	DO NOT SCALE THIS DRAWING, GENERAL TOLERANCE:±0.2	
	PART NO.:	PV2411HZ40L-CO	
	DRAWN BY:	DATE:	PROJECTION:
	CHECKED BY:	DATE:	SCALE:N.T.S
APPROVED BY:	DATE:	SHEET: 1 OF 1	