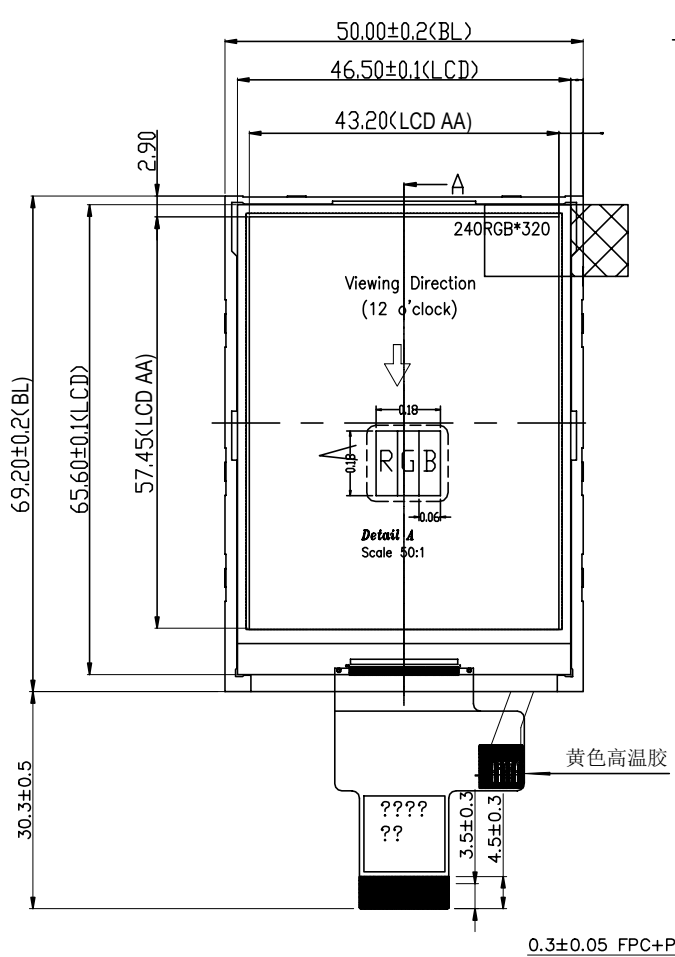


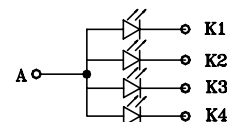
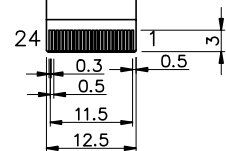
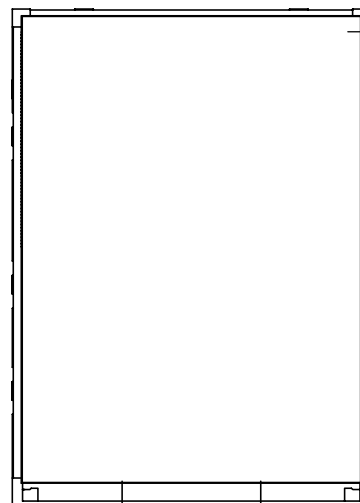
已确认此版本的所有图纸

客户签名: _____ 日期: _____

REV	DESCRIPTION	DATE
1.0	初次发行	2020-2-3
1.1	更改FPC长度	2021-3-8



2.45±0.1 总厚度



4pcs LED If=80mA

PIN	PIN NAME
1	LEDK
2	LEDA
3	GND
4	VCC
5	IOVCC
6	RESET
7	CS
8	RS/SCL
9	WR/DC
10	RD
11	SDA
12	D7
13	D6
14	D5
15	D4
16	D3
17	D2
18	D1
19	D0
20	IM
21	NC
22	NC
23	NC
24	NC

Specification:

- 1). Display mode: 262K Color TFT/Transmissive
- 2). Viewing angle: 12 o'clock (Gray inversion)
- 3). Operating temp.: -10° C~+60° C
Storage temp.: -20° C~+70° C
- 4). IC:ST7789V
- 5). Backlight: 4 chip White LED ,in parallel
- 6). Dimensions with mark "*" are important, with mark "(" are referenced

Kingtech Group Co.,Ltd.

TITLE:	ASSEMBLY	DO NOT SCALE THIS DRAWING, GENERAL TOLERANCE:±0.2	
PART NO.:	PV02816HZ24H		
DRAWN BY:		DATE:	PROJECTION:
CHECKED BY:		DATE:	SCALE:N.T.S UNIT: mm
APPROVED BY:		DATE:	SHEET: 1 OF 1