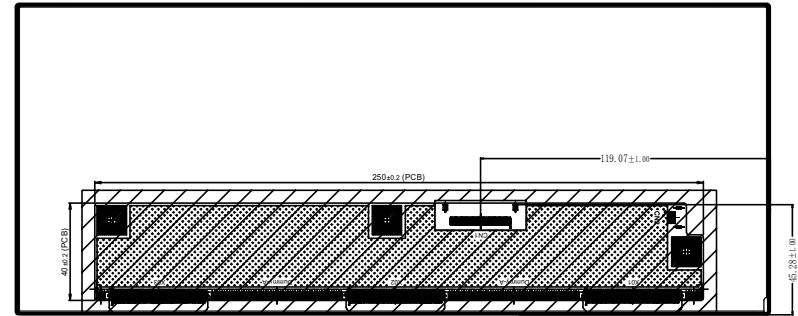
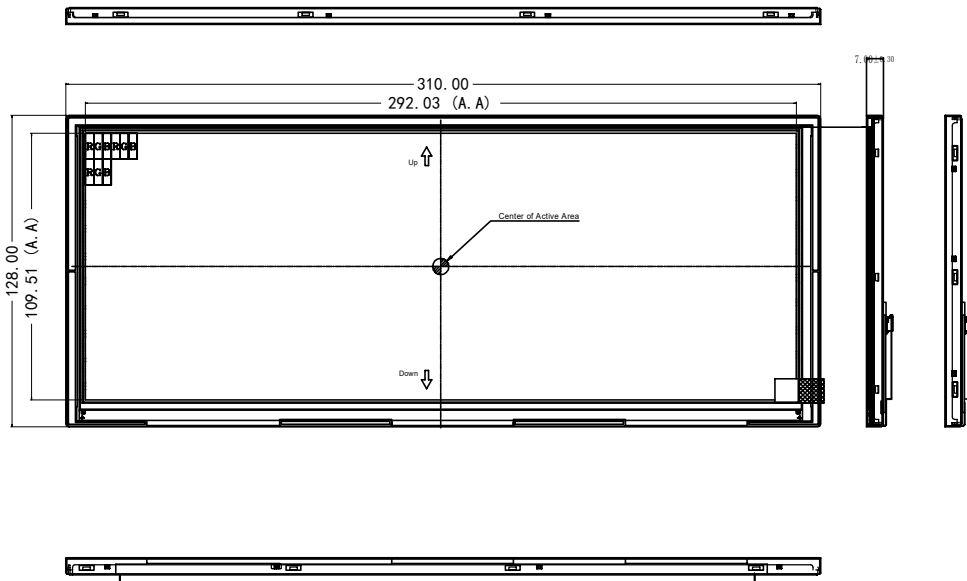


4

3

2

1



1	GND
2	NC/BIST
3	VCC
4	VCC
5	GND
6	GND
7	NC
8	NC
9	GND
10	DRXIN0-
11	DRXIN0+
12	DRXIN1-
13	DRXIN1+
14	DRXIN2-
15	DRXIN2+
16	DRXCLKIN-
17	DRXCLKIN+
18	DRXIN3-
19	DRXIN3+
20	ERXIN0-
21	ERXIN0+
22	ERXIN1-
23	ERXIN1+
24	ERXIN2-
25	ERXIN2+
26	ERXCLKIN-
27	ERXCLKIN+
28	ERXIN3-
29	ERXIN3+
30	GND
31	FAULT
32	RESET
33	STBYB
34	NC
35	NC
36	NC
37	NC
38	GND
39	GND
40	NC
41	LEDA
42	LEDA
43	LEDA
44	NC
45	LEDK
46	LEDK
47	LEDK
48	LEDK
49	NTC_A
50	NTC_K

NOTE:
 1 DISPLAY: 12.3" TFT TRANSMISIVE
 2 VIEW DIRECTION: ALL
 3 DRIVER IC:
 4 BL LED:
 5 OPERATION TEMP.: -30°C~+80°C
 6 STORAGE TEMP.: -30°C~+80°C
 7 UNSPECIFIED TOLERANCES IS ±0.3mm
 8 ALL MATERIAL AND PROCESSING SHOULD BE LEAD FREE
 9 CRITICAL DEMENSION MARKED *

光电参数(Ta=25° C):

项 目	符号	最小值	典型值	最大值	单位	测定条件 Condition
主屏 (含LCD, TP)	亮度 Luminance	Lv	900	1000		BL If= 420 mA (恒定电流测试) (亮度值为九点平均值)
	均匀性 Uniformity	AVG	70%			
	色度坐标 Colour Coordinate	X	0.273	0.323	0.373	
Y		0.280	0.340	0.380		
正向电压 Forward Voltage	Vf		27		V	
反向电流 Reverse Current	Ir			10	μA	Vr= * V

Kingtech Group Co., Ltd.

部品名称: LCM外形图		型号: PV012307W0250J	
部品编码:		????	????
单位: mm	?????: 1:1		
日期: 2023.08.03	版本: 00	???????????:	

V00	初版		
????	更改内容	????	????

4

3

2

1