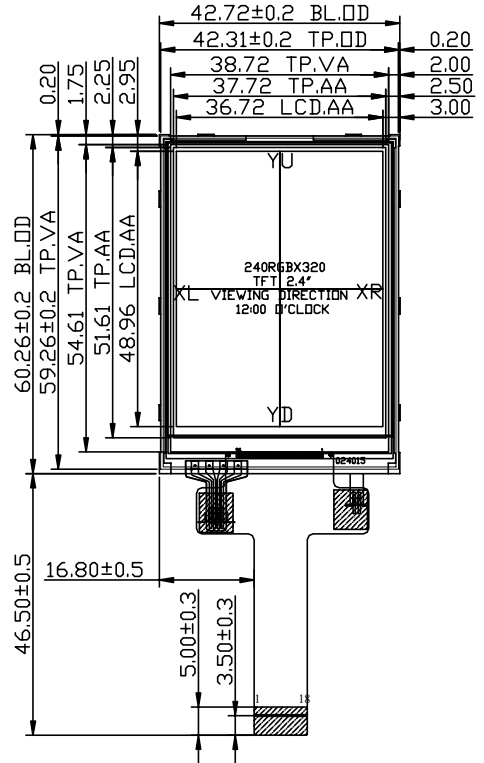


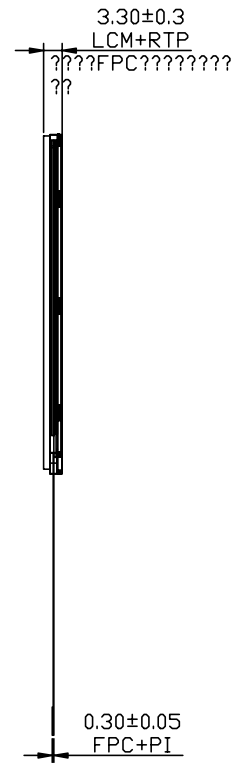
已确认此版本的所有图纸
 客户签名: _____ 日期: _____

REV	DESCRIPTION	DATE
1.0	首次设计;	2023-07-04

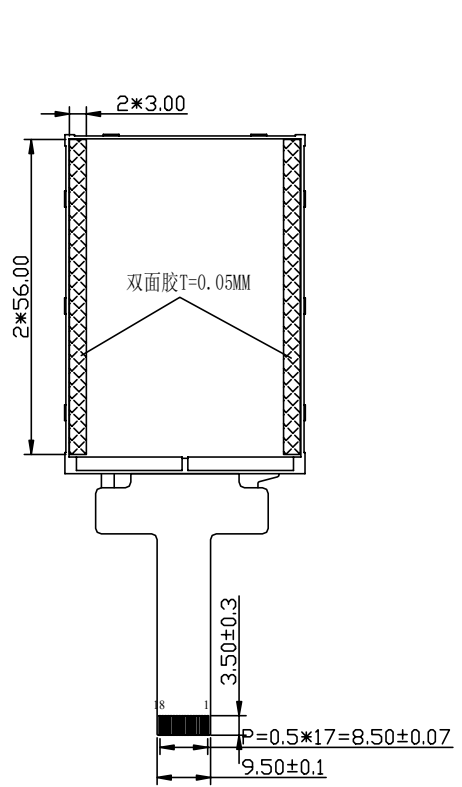
正视图



侧视图

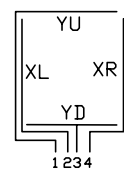
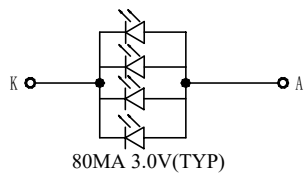


背视图



Pin Assignment	
1	GND
2	RESET
3	SCL
4	RS
5	CS
6	SDA
7	SDO
8	GND
9	VCI
10	LEDA
11	LEDK
12	LEDK
13	LEDK
14	LEDK
15	XL
16	YU
17	XR
18	YD

- RTP技术参数:
- 1、工作条件: DC5V;
 - 2、操作压力: 30-100g;
 - 3、线性度 $\leq \pm 1.5\%$; 绝缘阻抗 $> 10M\Omega$, 25V(DC);
 - 4、工作环境: $-10^{\circ}C \sim +60^{\circ}C$;
 - 5、储存环境: $-20^{\circ}C \sim +70^{\circ}C$;
 - 6、透光率: $> 80\%$;
 - 7、结构类型: [薄膜[单层膜]/玻璃型(F/G)];
 - 8、产品总厚度: 触摸屏 1.15mm MAX
 - 9、出线方式: FPC出线;
 10、ITO Film: 0.188mm亮面防刮。
 Glass: $500\Omega/\square$ (0.7mm)
 tail: FPC (pitch=0.7mm)
 - 11、使用寿命: 1,000,000次;
 - 12、响应时间: $< 10ms$ 。
 - 13、未注明公差: ± 0.5 ; 控制尺寸:



TOUCH SCREEN TAIL PIN OUT	
PIN	DESCRIPTION (VIEWED FROM FRONT)
1	YU
2	XL
3	YD
4	XR

- Notes:
1. Display Mode: 262k TFT/Normally White
 2. Viewing Angle: 12 o'clock(Gray inversion)
 3. LCD Driver IC: ST7789T3
 4. Operating Temp: $-10^{\circ}C \sim +60^{\circ}C$
 5. Storage Temp: $-20^{\circ}C \sim +70^{\circ}C$
 6. *:Critical Dimension, ():Reference Dimension
 7. Undefinition Tolerance: ± 0.2
 8. Surface Luminance: TBD CD/M² (TYP)
 9. Requirements on Environmental Protection: ROHS

Kingtech Group Co., Ltd.

TITLE:	ASSEMBLY	DO NOT SCALE THIS DRAWING, GENERAL TOLERANCE: ± 0.2	
PART NO.:	PV02423H0118Z-R		
DRAWN BY:		DATE:	
CHECKED BY:		DATE:	
APPROVED BY:		DATE:	
PROJECTION: OF		UNIT: mm	